



# INTERIOR DESIGN PORTFOLIO

---

2025

FACULTY OF COMMUNICATION AND DESIGN

# MESSAGE FROM THE DEAN



It gives me immense pleasure to welcome you to the Faculty of Communication & Design at Indus University.

As Dean, I take great pride in leading a faculty that is dedicated to academic excellence, innovation, and creative exploration. Our programs in Architecture, Interior Design, Filmmaking, and other design disciplines are built upon a strong foundation of critical thinking, research-driven inquiry, and professional practice. We strive to cultivate an academic environment where creativity is nurtured, ideas are challenged, and innovation thrives.

In today's rapidly evolving global landscape, design education must extend beyond aesthetics. It must respond to social, cultural, technological, and environmental transformations. At the Faculty of Communication & Design, we are committed to preparing our students to become responsible professionals who possess not only technical expertise but also ethical awareness and intellectual depth.

Our distinguished faculty members—comprising scholars, researchers, and practicing professionals—bring a wealth of knowledge and industry experience into the classroom. Through studio-based learning, interdisciplinary collaboration, internships, competitions, conferences, and community engagement, our students gain valuable exposure that bridges academia and professional practice.

We emphasize experiential learning and encourage our students to engage with real-world challenges. By fostering curiosity, resilience, and leadership, we aim to produce graduates who are capable of shaping the future of the creative and built environment industries both nationally and internationally.

I invite you to explore the dynamic opportunities offered within our faculty and to become part of a vibrant academic community that values innovation, integrity, and excellence.

Profound Regards,  
Dr Usama Farooq  
Dean  
Faculty of Communication & Design  
Indus University

# MESSAGE FROM THE CHAIRPERSON



I would like to express my sincere gratitude to all students in the Faculty of Communication & Design at Indus University. Our Faculty is a dynamic, multidisciplinary academic environment offering undergraduate and graduate programs in Architecture, Interior Design, Filmmaking, and other creative design disciplines. We are committed to nurturing artists, designers, filmmakers, and researchers who are prepared to contribute meaningfully to the evolving creative industries.

At the Faculty of Communication & Design, students are encouraged to discover and pursue their passions through dedication, critical inquiry, and research-based learning. Design education requires a deep and integrated understanding of art, aesthetics, theory, and practice. Our programs are thoughtfully structured to provide students with both conceptual foundations and practical exposure, fostering a well-rounded and transformative educational experience.

Our diverse faculty comprises experienced academics and practicing professionals who bring industry insight into the classroom. We strongly believe in experiential learning and actively engage students in pre-professional practices. Through meaningful internships, national and international competitions, conferences, study visits, gallery tours, and educational trips, students gain valuable exposure to the broader design and built environment landscape.

The Department of Communication & Design at Indus University offers a contemporary and forward-thinking curriculum that helps students develop the knowledge, skills, and professional attitudes required in today's global context. Our programs emphasize ethical responsibility, social awareness, and professional integrity, preparing graduates to become responsible contributors to society.

What distinguishes our department is our young, dynamic, and highly committed faculty who seamlessly integrate theoretical inquiry with practical application. We remain dedicated to fostering innovation, creativity, and academic excellence in all aspects of design education.

Profound Regards,  
Sana Gul  
Chairperson & Lecturer  
Department of Media Studies & Design  
Faculty of Communication & Design

# MESSAGE FROM THE HEAD OF INTERIOR DESIGN PROGRAM



It is with great pride and enthusiasm that I welcome you to the Interior Design Program at the Faculty of Communication & Design, Indus University. At the Faculty of Communication & Design, students are encouraged to discover and pursue their passions through dedication, critical inquiry, and research-based learning. Design education requires a deep and integrated understanding of art, aesthetics, theory, and practice. Our programs are thoughtfully structured to provide students with both conceptual foundations and practical exposure, fostering a well-rounded and transformative educational experience.

Interior Design is more than the creation of beautiful spaces—it is a thoughtful and responsible discipline that shapes the way people live, work, and interact within the built environment. As the Head of the Interior Design Program, I am committed to cultivating a learning environment that inspires creativity, critical thinking, innovation, and professional growth.

Our program is carefully structured to provide students with a strong foundation in design principles, spatial planning, materiality, sustainability, human-centered design, and emerging technologies. We integrate theory with hands-on studio practice, ensuring that students gain both conceptual clarity and practical competence. Through research-driven projects, collaborative learning, and design exploration, students are encouraged to develop their unique design voice while responding thoughtfully to contemporary challenges.

We strongly believe that meaningful design education extends beyond the classroom. Our students actively participate in internships, design competitions, exhibitions, workshops, and study visits, gaining valuable industry exposure and real-world experience. By engaging with professionals, clients, and communities, they learn to approach design with responsibility, empathy, and ethical awareness.

Our dedicated faculty members—comprising experienced academics and industry practitioners—mentor students closely, guiding them through a transformative academic journey. We emphasize innovation, sustainability, and social responsibility, preparing our graduates to become confident professionals capable of contributing to the evolving global design industry.

Profound Regards,  
Muhammad Abrar Khokhar  
Head of Interior Design Program  
Faculty of Communication & Design  
Indus University

# LIST OF GRADUATED STUDENTS

1)Bisma Ahmed

2)Hadia Khan

3)Ibher Noor

4)Kiran Khan

5)Konain Amir

6)Mareeha Malik

7)Mariya Abid

8)Muhammad Qasim

9) Muhammad Wahaj Ul Haq

10) Sidrah Mushtaque

11) Syed Muhammad Ahmed

12) Waniya Shahid

13) Yasmin Bano

# LIST OF THESIS ADVISORS

## LOCAL THESIS ADVISORS

Farrukh Salman



Zain Hassan



Sehr Parvaiz



Asad Ali



Farrah Sarfaraz



Muhammad mehdi



Syed Sheeraz Ali



Amir Ali



Noor Us Saba



Amna akram



Faizan Azhar



Afshan  
Jamshed



Laiba Khan



Sheema A Rizki



Hallar Mastoi



Haris Ali



# LIST OF THESIS ADVISORS

## INTERNATIONAL THESIS ADVISORS

Anindya  
Dhiracitta



German Otto  
Bodenbender



Sara Mohamed



Mila Tsoy



Roopak Ranjan



Ar.Inam



Aya Alhamad



Sara Anati



Satia Anand



Alvin





# MIND WELLNESS CENTER

Scan For LinkedIn



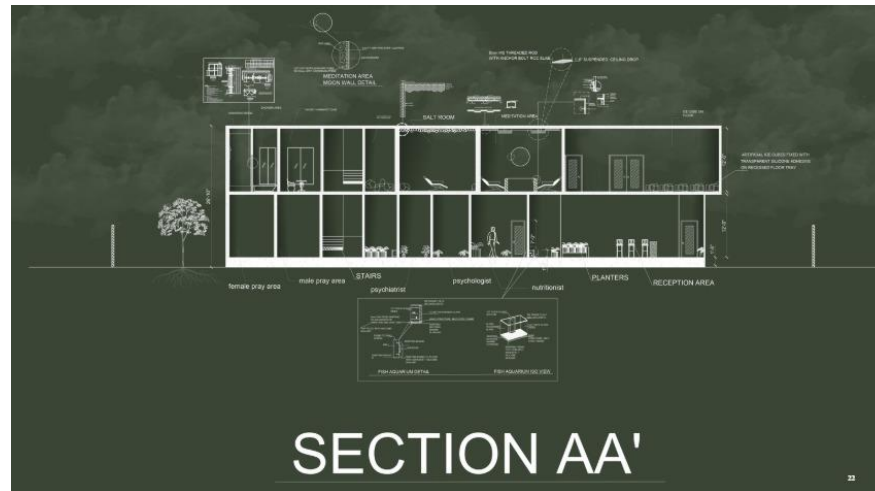
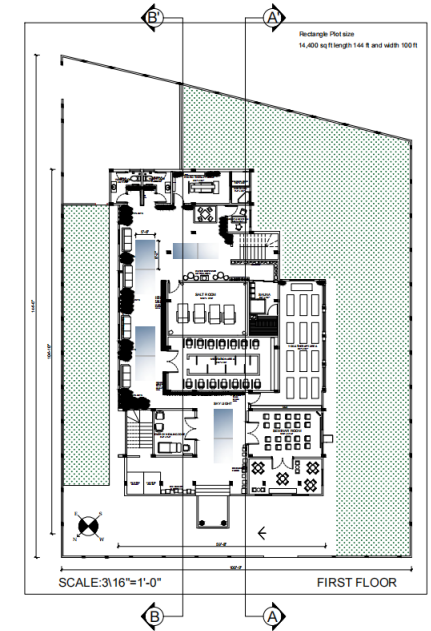
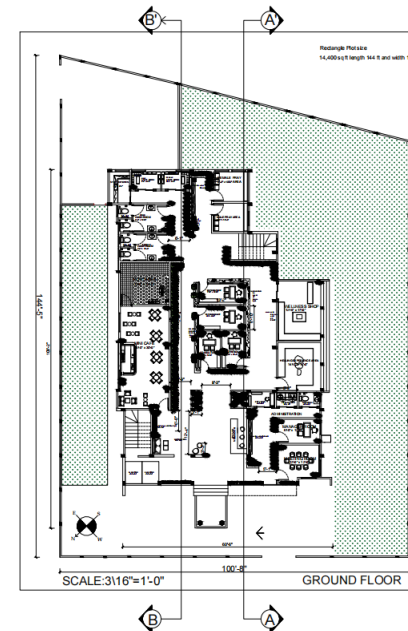
BISMA AHMED  
1164-2021

## SYNOPSIS:

The Mind Wellness Center is a therapeutic interior design project focused on creating a healing environment for mental and emotional well-being. In today's fast-paced urban life, stress, anxiety, and depression are increasing, highlighting the need for spaces that support psychological health. This project aims to design a calm, safe, and restorative environment using biophilic design principles, natural materials, soft lighting, and earthy tones.

The center includes therapy rooms, meditation spaces, yoga and Reiki rooms, and relaxation areas designed to reduce stress and promote inner balance. The project demonstrates how thoughtful interior design can positively influence human psychology and create spaces that nurture healing and holistic well-being.

## LAYOUT PLAN



SECTION AA'

S  
E  
C  
T  
I  
O  
N

R  
E  
N  
D  
E  
R  
S





# BEYOND THE FACADE

(Conceptual Depth & Multi-layered Experiences)

Scan For LinkedIn



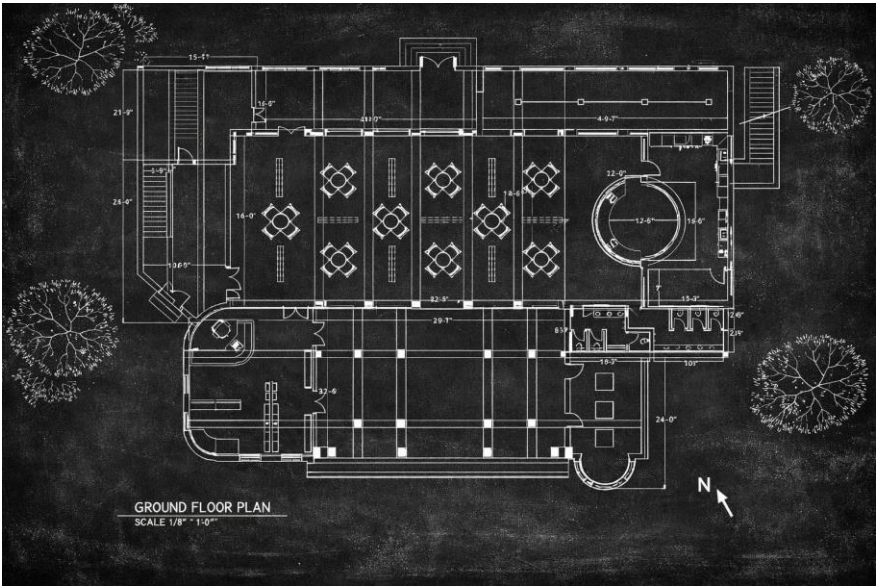
HADIA KHAN  
540-2022

SYNOPSIS:

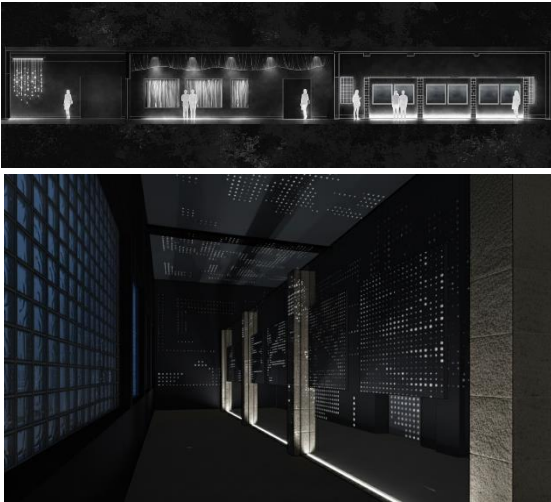
This thesis proposes an art gallery designed as an emotionally immersive yet visually minimal environment. The concept explores how light, materiality, and spatial transitions can create depth without relying on decoration. Spaces are intentionally simple in form but rich in atmosphere, encouraging visitors to experience the gallery beyond first impressions. The design is organized into distinct zones — Canvas Flow, Texture & Pattern, Azure Void, Traces of Past, Lumen Café, Chromatic Lab, Tactile Sculpture, and Retail & Reception — each responding differently to natural and artificial light.

In daylight, the spaces feel open and contemplative; under artificial lighting, they become intimate and dramatic. By treating light as an interior material and layering textures, contrasts, and framed views, the gallery transforms throughout the day, creating a calm, introspective environment where perception continuously evolves.

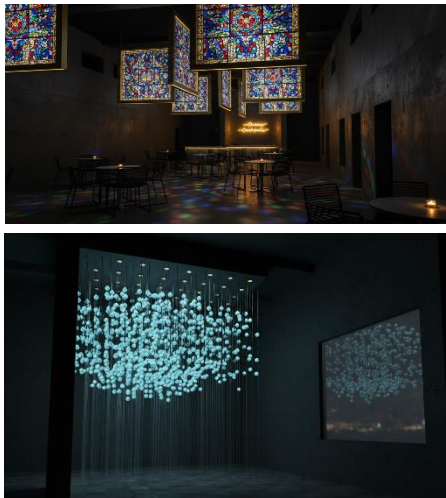
PLAN



SEC-ELEVATION



RENDERS



# RETREAT IN A BOX:

A Transportable Modular Living System Using Non-Permanent Construction Methods.

Scan For LinkedIn



IBHER NOOR  
148-2022

## SYNOPSIS:

This thesis explores a transportable and modular living system that can be assembled, stacked, and relocated without permanent construction. The project focuses on interior planning strategies that support flexibility, reuse, and easy transportation rather than fixed, site-bound design. Using container-based modules, the study examines non-welded and reversible construction methods that allow spaces to be adapted and reconfigured over time. Interior zoning, multifunctional furniture, and lightweight materials are used to make compact spaces efficient and practical for daily use.

The design proposal, Retreat in a Box, presents an interior system where living, sleeping, and working functions can shift within a limited footprint. Through drawings and technical details, the thesis demonstrates how interior design can lead modular housing solutions that are functional, adaptable, and build-ready.

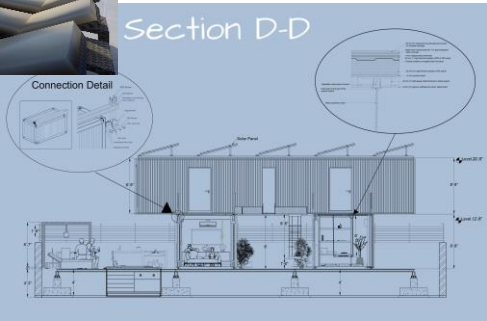


## RENDERS



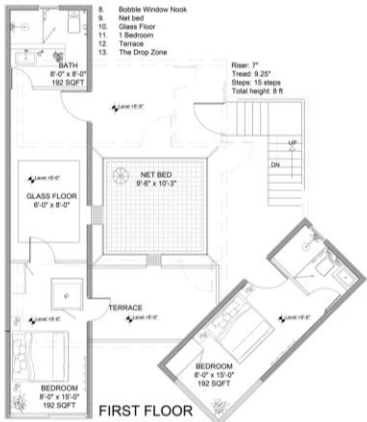
## SEC-ELEVATION

Section D-D



## PLAN

### GROUND FLOOR





# THE DEPTH IN SPACE

("The Depths Between Navigating Illusion And Reality In Space")

Scan For LinkedIn



## SYNOPSIS:

This thesis explores how spatial design can influence the human mind by using illusion interaction and sensory experiences. It studies how people perceive space how environments can change emotions and thinking and how a sequence of designed spaces can guide users from entertainment toward awareness reflection and mental well-being. The project explores the idea of depth in space as a journey where users move through a sequence of interactive zones that engage curiosity challenge perception and encourage reflection.

By combining mind based games optical illusion installations sensory experiences and calming creative areas the design demonstrates how environments can shift people from passive entertainment toward active engagement and emotional release. The study aims to show that thoughtfully designed spaces can become tools for mental well being self awareness and meaningful experience rather than temporary distraction.

KIRAN KHAN  
2109-2021

R  
E  
N  
D  
E  
R  
S



## LAYOUT PLAN



# ABYSS ABOVE

Scan For LinkedIn

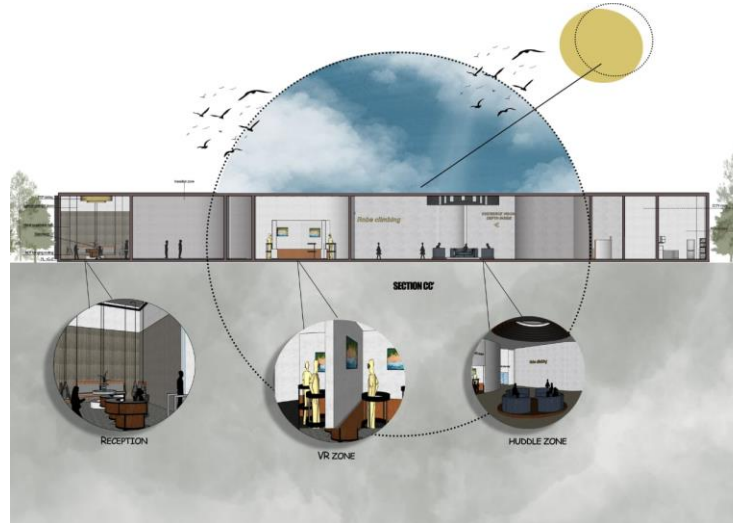


KONAIN AMIR  
375-2022

## RENDERS



## SECTION



## LAYOUT PLAN





# THE HIDDEN JOURNEY

Scan For LinkedIn

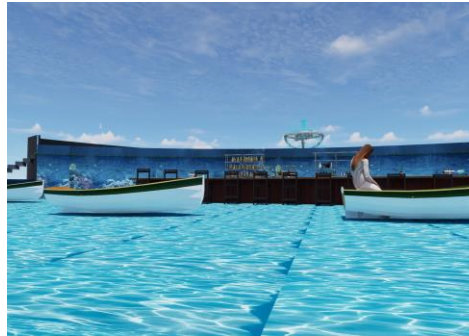
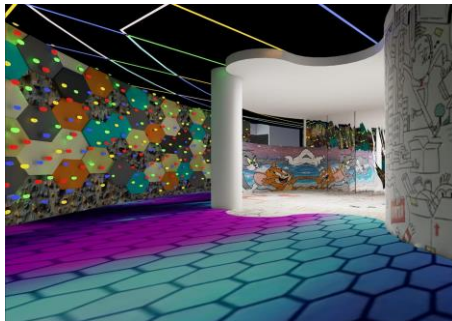


MAREEHA  
MALIK 190-2022

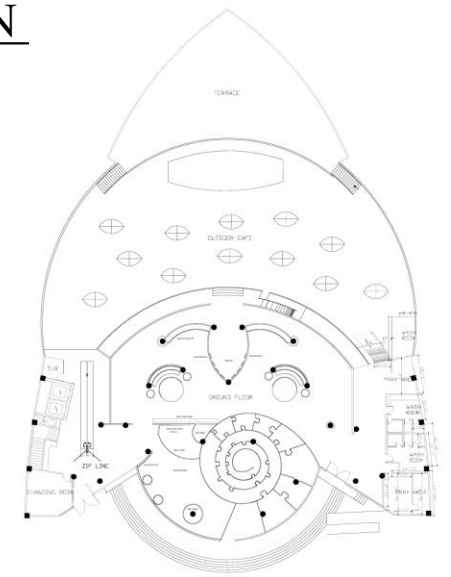
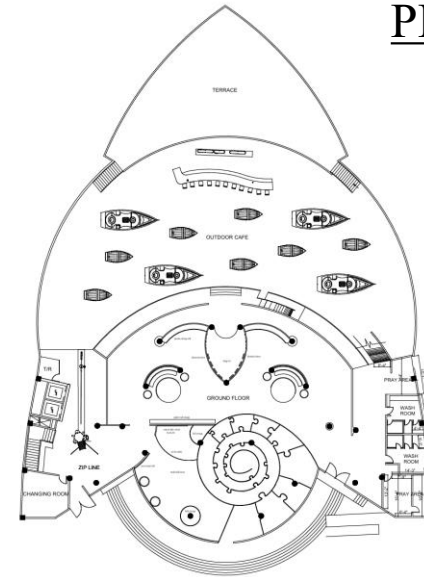
## SYNOPSIS:

The Hidden Journey is an immersive and experiential space designed to encourage social interaction, emotional growth, and self-discovery through a sequence of team-based activities. The project is inspired by the idea of creating an environment where individuals especially those who are naturally reserved can gradually build confidence and connect with others without feeling pressured or labeled. The spatial journey begins with a psychologically designed puzzle tunnel that creates curiosity and uncertainty, followed by interactive and physically engaging spaces such as a basketball zone, collaborative children's areas, and outdoor experiential seating. The main experience continues in the basement, where visitors participate in a series of team-based challenge rooms including a telephone room, block pattern game, evil eye game, maze projection space, moving tunnel, cage escape room, door confusion room, and finally an interactive projection-based art room. Each space is designed to evoke different emotions—fear, excitement, confusion, teamwork, and creativity allowing users to move through a transformative journey. The project focuses on immersive design, sensory engagement, and experiential architecture to create meaningful social interaction.

## RENDERS



## PLAN



# Markaz-e-Nur:

## Natural Spectrum of Light in Interior Spaces.

Scan For LinkedIn



MARIYA ABID  
452-2022

### SYNOPSIS:

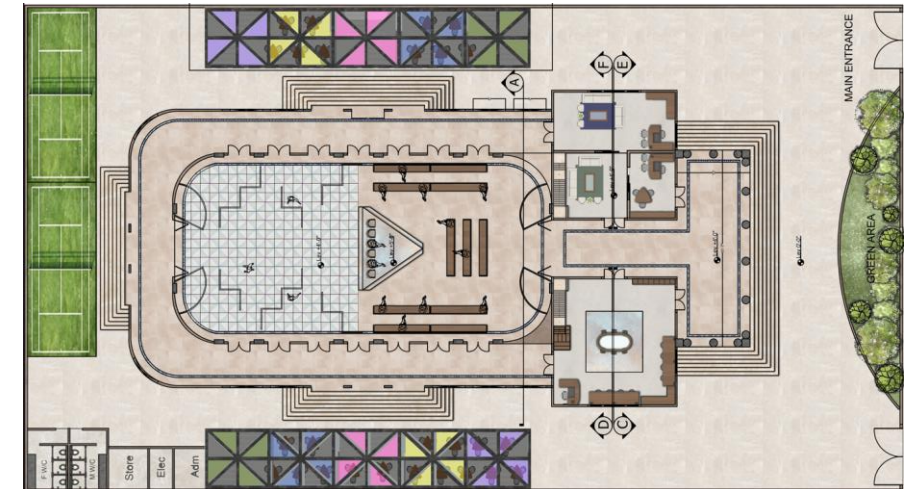
This thesis explores architecture as a medium to restore the lost sense of community in contemporary urban life, where privatized lifestyles and individualism have weakened collective social bonds. MARKAZ-E-NUR, A community center for light and collective life. Using light as the primary design driver, the project draws from the phenomenon of spectral and prismatic light, where a unified beam represents communal unity and its spectrum symbolizes individuality and coexistence.

Located at the historically significant Khaliq Dina Hall, Karachi, the proposal reimagines the site as a community and civic center through adaptive reuse, introducing learning spaces, counseling facilities, gathering halls, and recreational zones. Light functions as an integral spatial system—shaping movement, interaction, and emotional experience—ensuring that the building cannot function meaningfully without it. The project positions light as a tool for inclusivity, healing, and social reconnection, reinforcing the idea that collective growth emerges when individuality is acknowledged within unity.

### RENDERS



### PLAN





# IMPOSTER:

An Experiential Space Exploring Faux Elements And Human Perception

Scan For LinkedIn



MUHAMMAD  
QASIM 120-2022

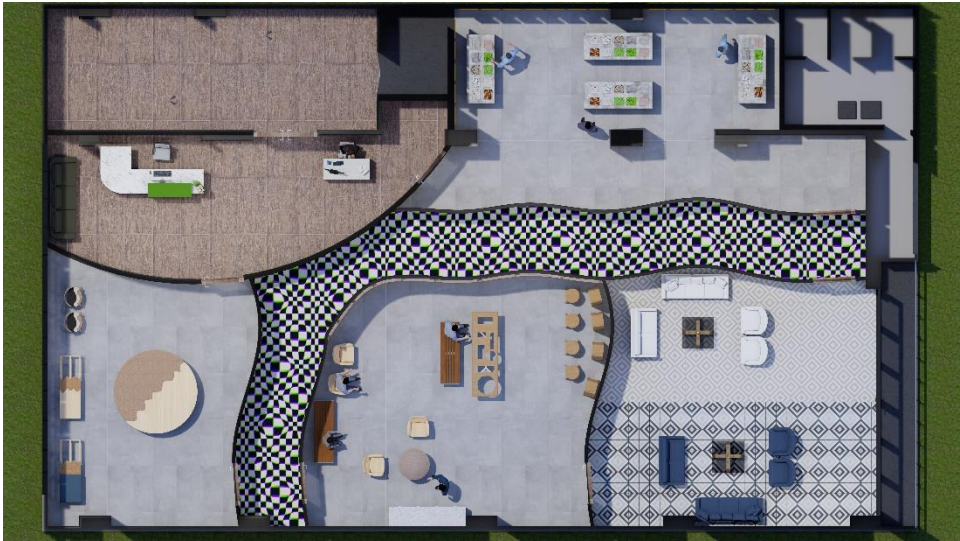
**SYNOPSIS:**

This thesis explores how faux materials and simulated spatial strategies can be used as experiential tools to challenge perceptions of authenticity in interior design. Based on the concept of fake identity, the project creates spaces that appear familiar yet conceal layered narratives, blurring the line between real and artificial. Inspired by case studies such as the Jewish Museum Berlin and Baroque furniture, the research positions illusion as a meaningful design method rather than a limitation.

Applied to the Qasr-e-Shereen Building, the design proposes a sequence of immersive zones that distort function, manipulate sensory perception, and encourage user interaction, ultimately leading to a reveal of material truth. The project concludes that powerful and memorable spatial experiences can emerge from controlled illusion, where artificiality becomes a medium for emotional and cognitive engagement.



LAYOUT PLAN





# BEYOND FITNESS:

Designing Interiors That Nurtures Mind, Body & Energy

Scan For LinkedIn



MUHAMMAD  
WAHAJ UL HAQ  
1225-2019

## SYNOPSIS:

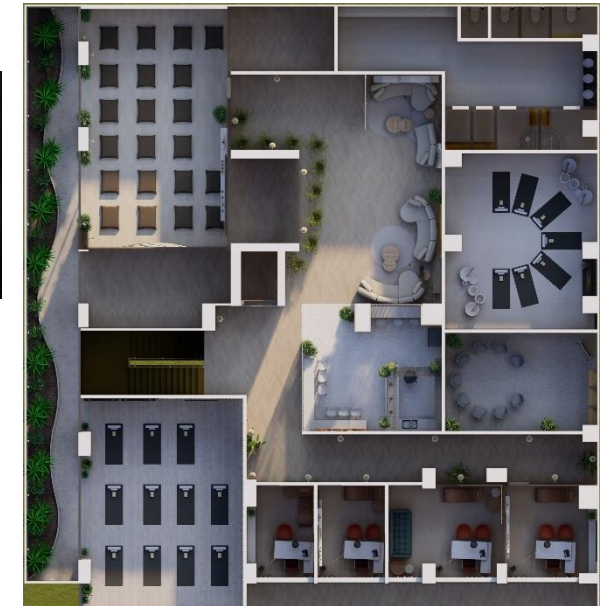
This thesis, “Beyond Fitness,” explores the design of a holistic wellness interior that combines physical fitness and mental well-being within a single spatial journey. The project challenges traditional gym environments by integrating meditation and mindfulness spaces alongside active training zones, creating a balance between movement and stillness. Through thoughtful zoning, material selection, lighting, and sensory transitions, the design guides users from dynamic, high-energy areas to calm, introspective environments that support relaxation and mental clarity.

Informed by wellness-focused case studies, the project demonstrates how interior design can positively influence both physical performance and emotional health. Aimed at urban users seeking a complete wellness experience, the thesis highlights the role of interior spaces in nurturing body, mind, and energy through a unified and meaningful environment.

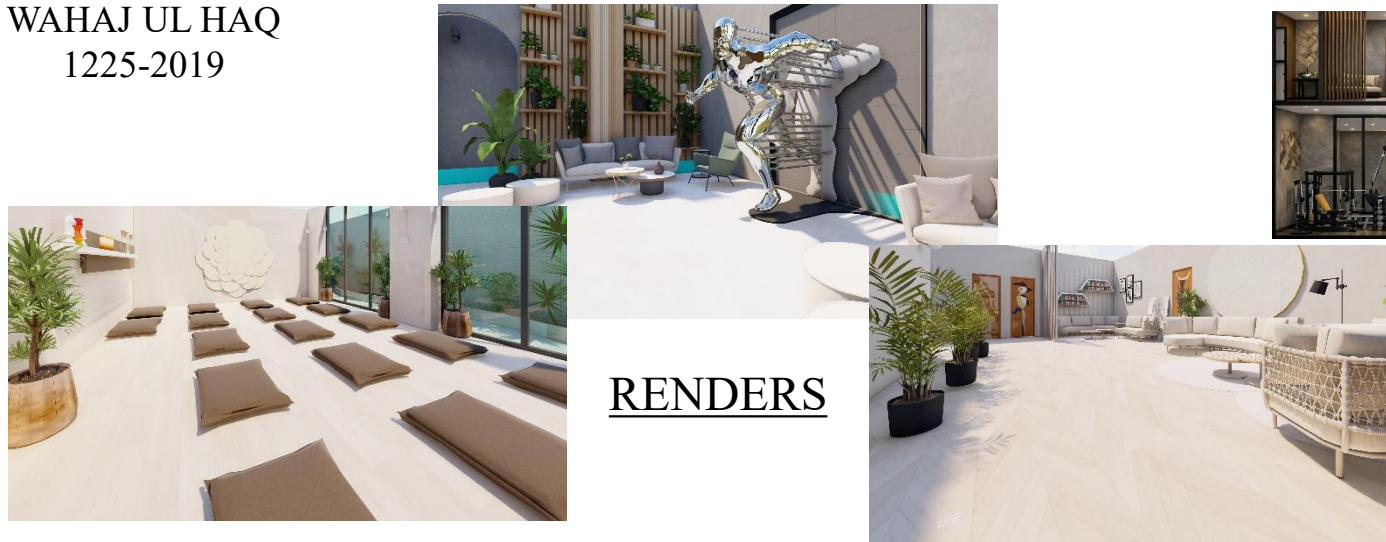
## SEC-ELEVATION



## PLAN



## RENDERS



# PAST FORWARD

## Cognitive Rebirth Of Forgotten Spaces

Scan For LinkedIn

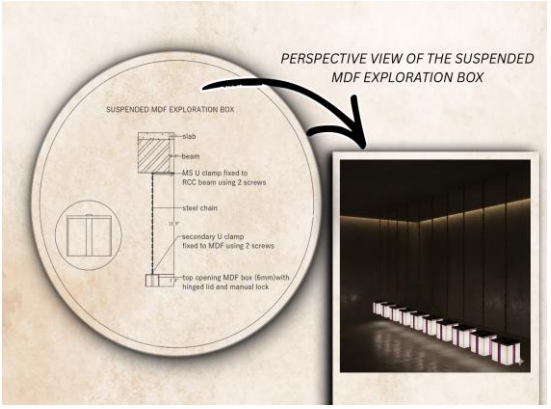
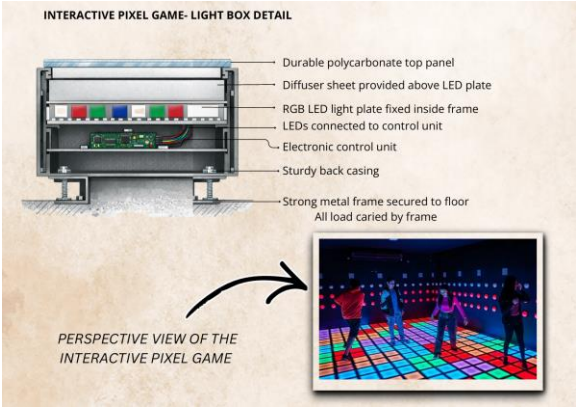
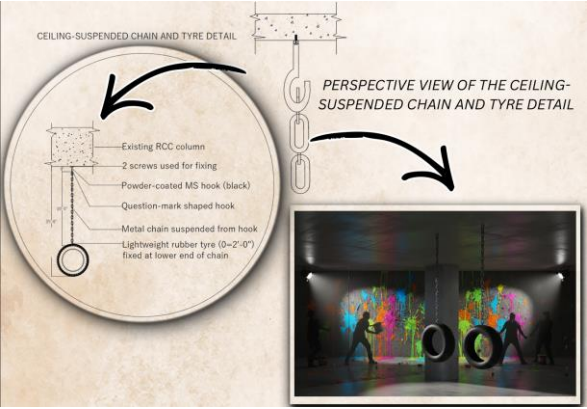
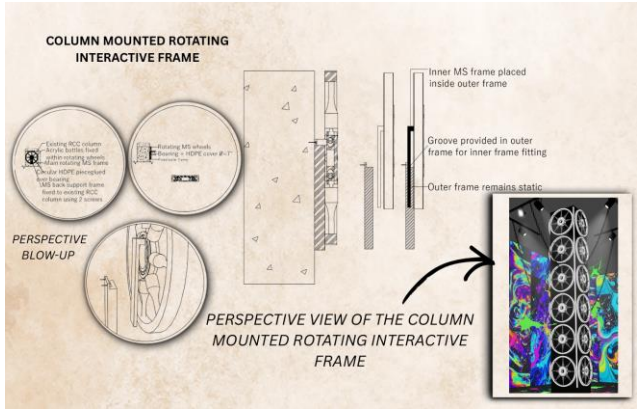


SIDRAH  
MUSHTAQUE  
386-2022

### SYNOPSIS:

Past Forward: A Cognitive Rebirth of Forgotten Spaces explores how interior architecture can move beyond static form to become an active cognitive experience. Karachi lacks experiential interior spaces that engage curiosity, memory, and human behavior. Many strategically located sites remain abandoned while global cities invest in immersive, interactive environments. This thesis addresses that gap by reimagining a forgotten site as a sequential experiential journey. Inspired by Alice in Wonderland as a psychological framework rather than a fantasy narrative, the project translates confusion, altered perception, and curiosity into architectural strategies such as spatial compression, sensory distortion, intuitive interaction, and controlled uncertainty. The design unfolds through interconnected zones that encourage movement, anticipation, and participation, allowing users to process space rather than simply observe it. Architecture functions as a system to be experienced, remembered, and emotionally registered. Past Forward proposes experiential reuse as a design methodology—reviving forgotten spaces by transforming them into cognitive environments that stimulate the mind and create lasting memory.

### RENDERS AND DETAILS





# CREATIVITY - TRANSFORMING MOVEMENT INTO EXPERIENCE

Scan For LinkedIn

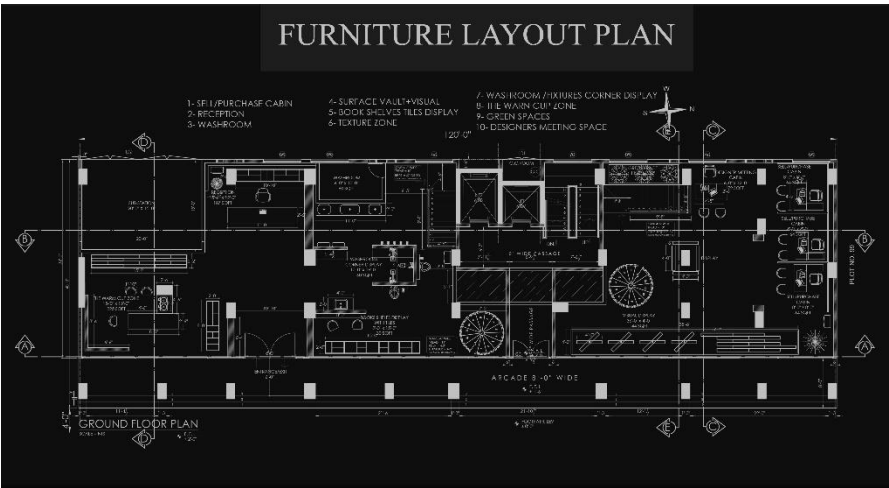
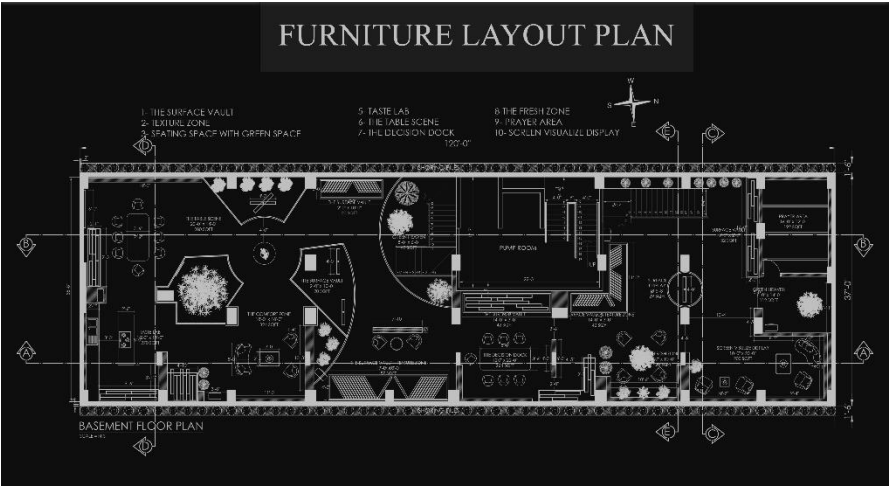
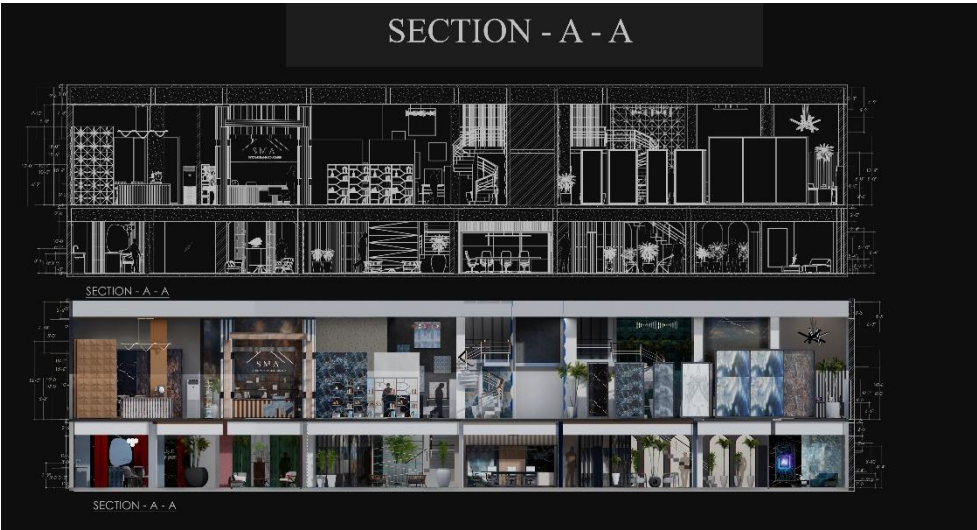


## SYNOPSIS:

This thesis is about designing a materials showroom as an experiential space. Instead of a simple display area, the showroom is planned as a journey where users explore materials through movement and interaction. The design focuses on smooth transitions, spatial flow, and sensory experience to make material selection more engaging

MUHAMMAD  
AHMED 37-2022

R  
E  
N  
D  
E  
R  
S



# SENSESCAPE

## Designing Interactive Environments for Emotional Engagement

Scan For LinkedIn



### SYNOPSIS:

This thesis explores Sensory Architecture in interior design, focusing on creating multisensory spaces that enhance learning, interaction, and emotional well-being. Moving beyond visual design, the project integrates light, sound, texture, technology, and spatial sequencing to shape user experience and behavior.

The design features Tech Talk Nooks, AI Pods, Digital Gardens, Therapy Rooms, and Interactive Learning Zones, emphasizing spectral lighting, tactile materials, and responsive elements. By blending technology with human-centered design, the project presents Sensescape as a future-focused approach for dynamic educational and experiential environments.

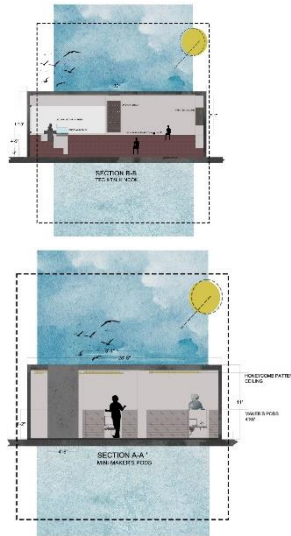
WANIYA SHAHID

285-2022

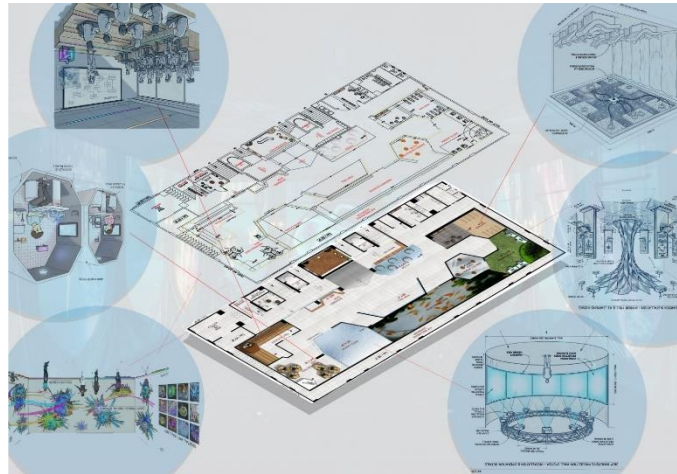
R  
E  
N  
D  
E  
R  
S



S  
E  
C  
T  
I  
O  
N  
S



### SECTIONAL PLAN



### LAYOUT PLAN





# THE WELLNESS CIRCLE

Scan For LinkedIn



YASMEEN  
BANO 569-2020

## SYNOPSIS:

This thesis explores the design of a Palliative Care Center as a psychological healing space, emphasizing the role of interior in supporting emotional and mental well-being. Palliative care extends beyond medical treatment to address comfort, dignity, and holistic healing for patients and their families. The design approach is based on biophilic principles, incorporating natural materials, soft lighting, earthy tones, and organic forms to create calm and stress-reducing environments.

These elements help strengthen the connection between humans and nature within a clinical setting. Guided by the four pillars of palliative care—physical, psychological, social, and spiritual—the project reimagines the Senior Citizen Department at Liaquat National Hospital to better respond to palliative needs. Through thoughtful spatial planning and sensory design, the thesis highlights how interior architecture can enhance comfort and improve quality of life.

## SECTIONS



## RENDERS

## LAYOUT PLAN



